

THEHIBERNIASF.COM

EST. 1892



SAN FRANCISCO, CA



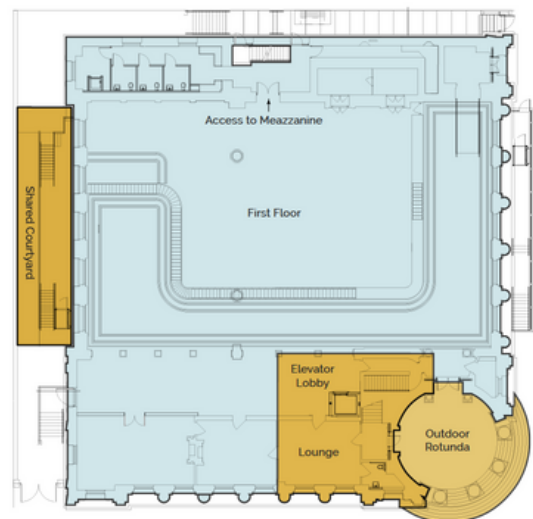
THE HIBERNIA  
SAN FRANCISCO





## MAIN HALL | 16,630 SQ. FT

The Main Hall, offers one of the largest special event venues in San Francisco. This unique, expansive space features an original bank teller counter from 1892, opulent gold detailing and breathtaking stained glass skylights. The Hall also includes a suite of furnished break-out rooms, as well as a marble-encased vault. The Main Hall is the perfect location for your holiday party, corporate celebration, gala, wedding or conference.

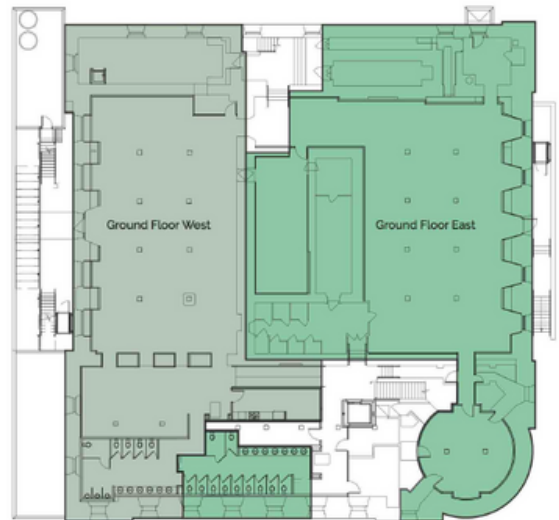






## 1 JONES/LOWER LEVEL | 17,741 SQ. FT

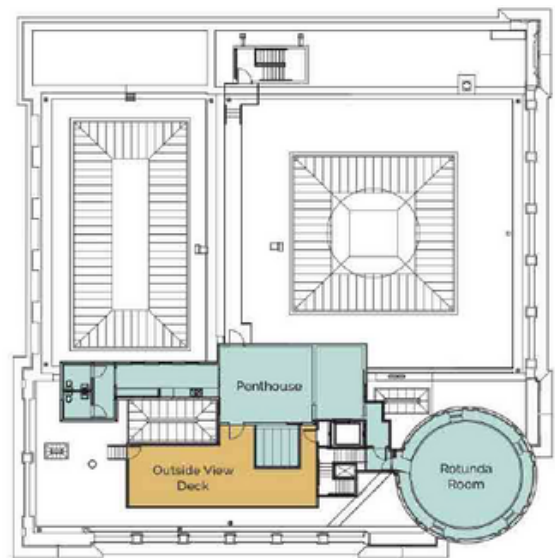
With its exposed brick, concrete flooring, steel columns and bank vaults, 1 Jones offers over 17,500 SF of industrial-style open space. It's a perfect venue for after-work hangouts, dance parties, whiskey tastings or conference break-out space.





## THE PENTHOUSE GALLERY | 2,745 SQ. FT

The Gallery's loft-style space boasts lots of natural light and private access to The Hibernia's dome and rooftop, providing the ideal setting for rooftop happy hours, birthday parties, receptions, elegant dinners and intimate gatherings.

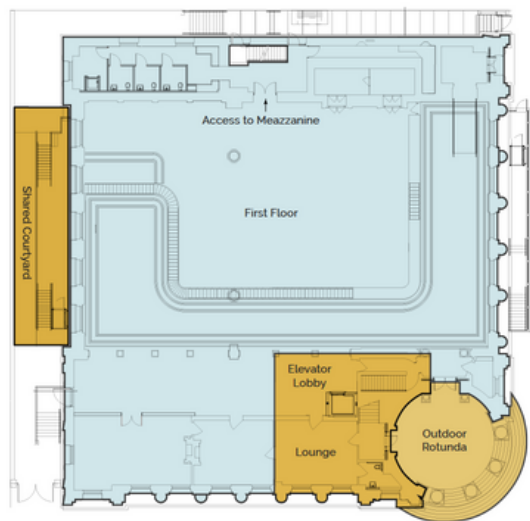
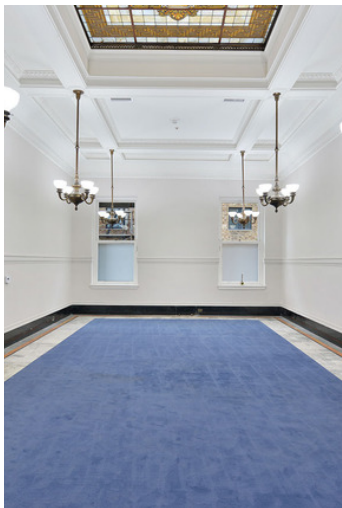






## TOBIN SUITE LIBRARY| 4,900 SQ. FT

Welcome to the storied offices of Richard M. Tobin; banker, diplomat, friend of Theodore Roosevelt and one of San Francisco's original movers and shakers. This luxurious suite of rooms features original fireplaces, light fixtures and a stunning Tiffany-style skylight. The Tobin Suite makes a perfect green room, pre-wedding suite or VIP area and can be furnished to your exact taste.





## BOOKINGS & INQUIRIES

Interested in a site tour of The Hibernia or looking for a custom quote for your event? Contact us today.

[events@thehiberniasf.com](mailto:events@thehiberniasf.com) | +1 415 940 1180



THE HIBERNIA  
SAN FRANCISCO