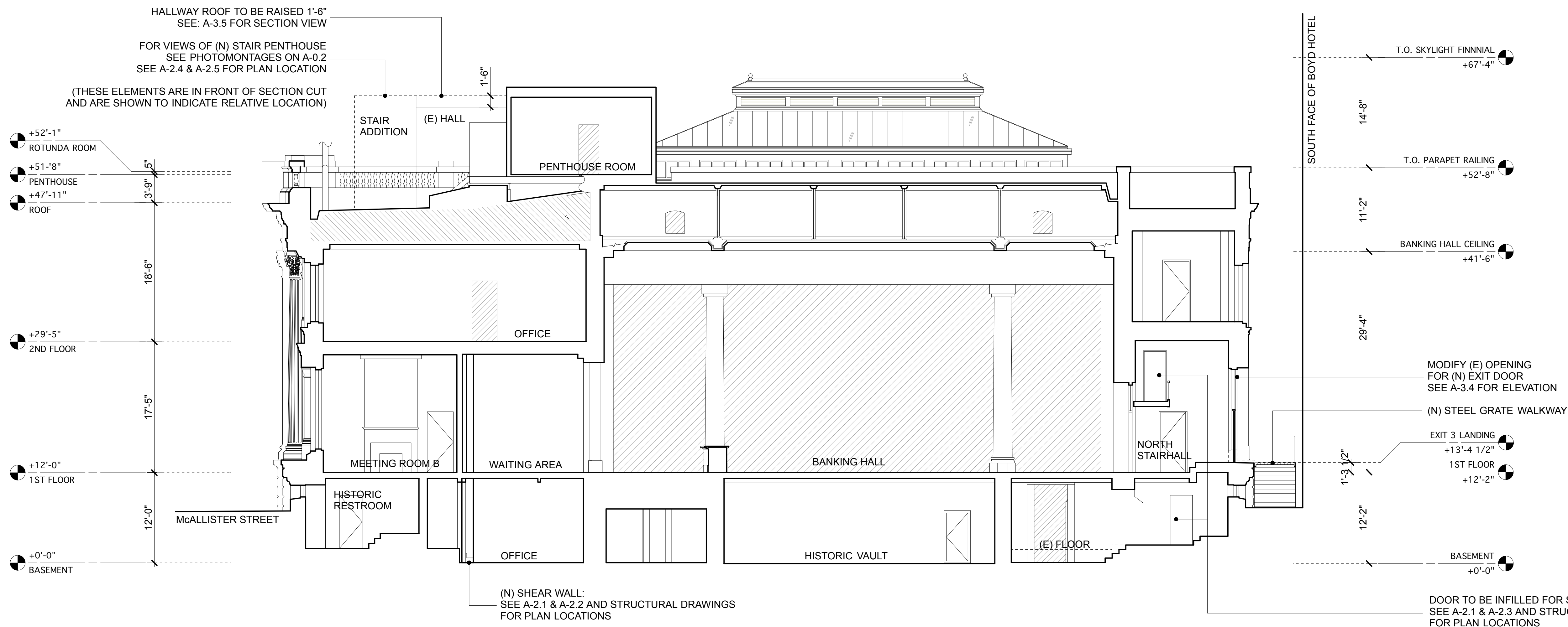
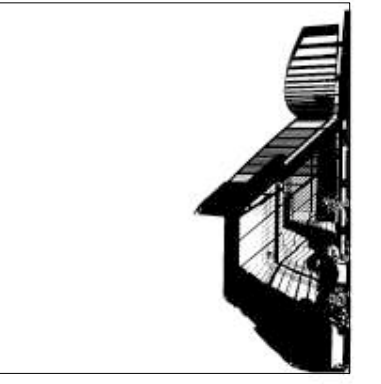
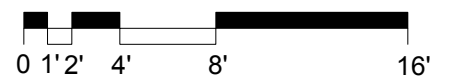


1 EAST WEST SECTION B-B
Scale: 1/8" = 1'-0"



1 NORTH-SOUTH SECTION C-C
Scale: 1/8" = 1'-0"



ELEVATIONarchitects
1099 - 23rd Street
Suite 18
San Francisco, CA 94107
415.537.1125 :v
415.821.1121 :f
www.elevationarchitects.com :w



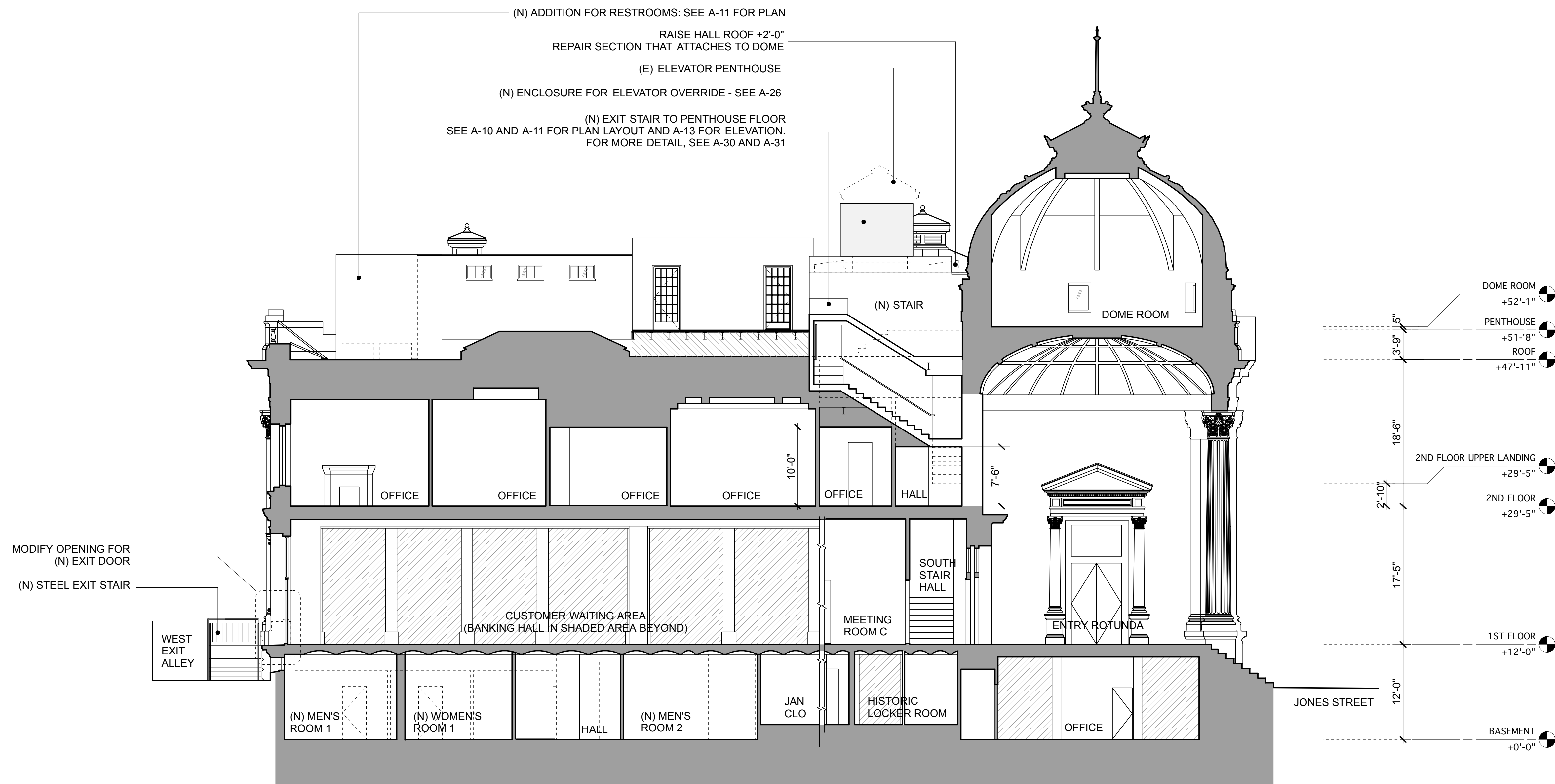
Renovation
HIBERNIA BANK
1 Jones Street
San Francisco, CA 94102

#	date	issue

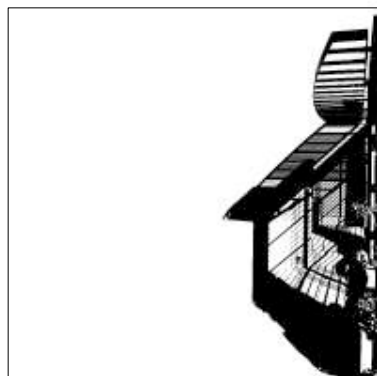
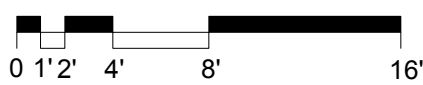
Building Sections

project:	09.03
drawn by:	JP
checked by:	
date:	06.03.13
scale:	

A-3.5



1 EAST WEST SECTION A-A
Scale: 1/8" = 1'-0"



ELEVATIONarchitects

1099 - 23rd Street
Suite 18
San Francisco, CA 94107

415.537.1125 :v
415.821.1121 :f
www.elevationarchitects.com :w



Renovation
HIBERNIA BANK
1 Jones Street
San Francisco, CA 94102

#	date	issue

Building Section

project: 09.03
drawn by: JP
checked by:
date: 06.03.13
scale:

A-3.6